

# Osteotomy

Dr. Nathaniel Stewart

Chippewa Valley Orthopedics and Sports Medicine

# Osteotomy

- Definition: to cut a bone
- Osteotomy is used to realign bones that are either bent or twisted in a way that is creating a problem for a patient

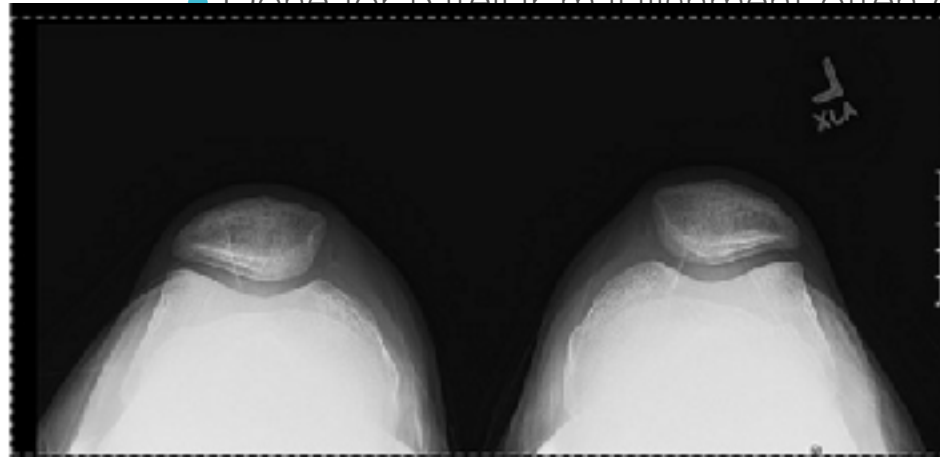
# Osteotomy

- We will review common osteotomies
  - 1. Tibial tubercle osteotomy
  - 2. Upper tibial osteotomy
  - 3. Distal femoral osteotomy
  - 4. Proximal femoral rotational osteotomy

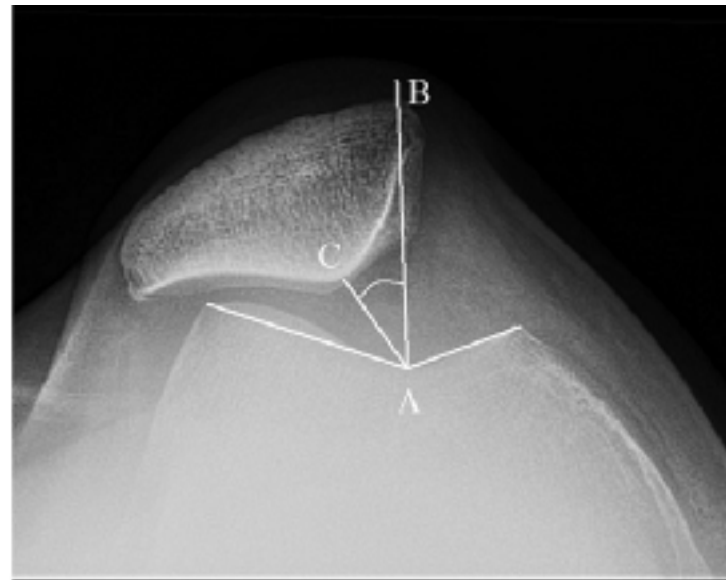
# Osteotomy

- Tibial Tubercle Osteotomy

- Done for patellar malalignment, often combined with a knee scope and



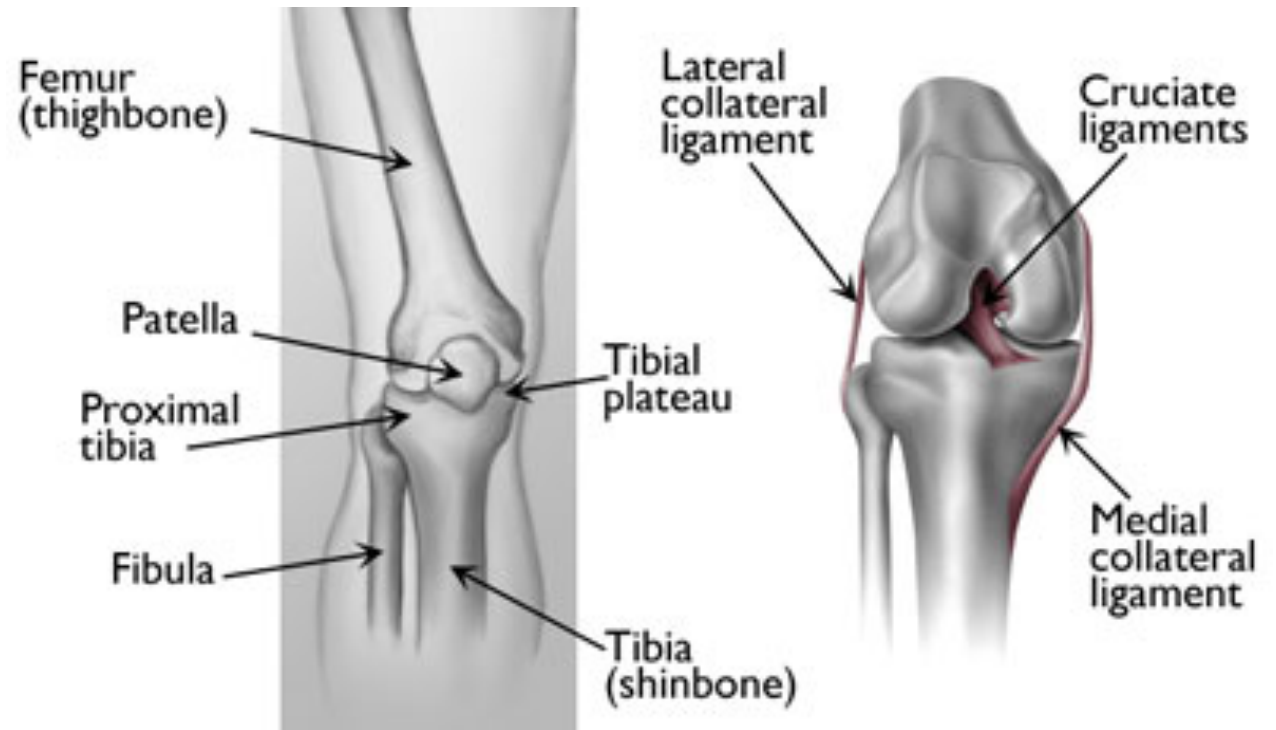
Sunrise View: Normal



Sunrise View: Abnormal

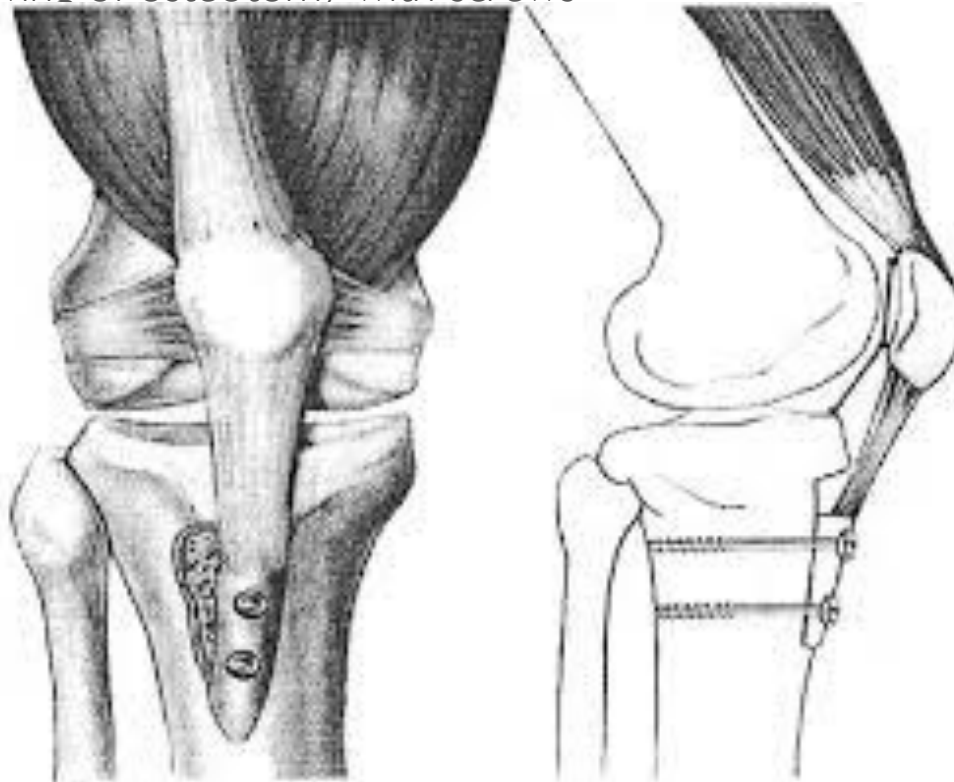
# Osteotomy

- Tibial Tubercle Osteotomy



# Osteotomy

- Tibial Tubercle Osteotomy
  - Drawing of osteotomy with screws



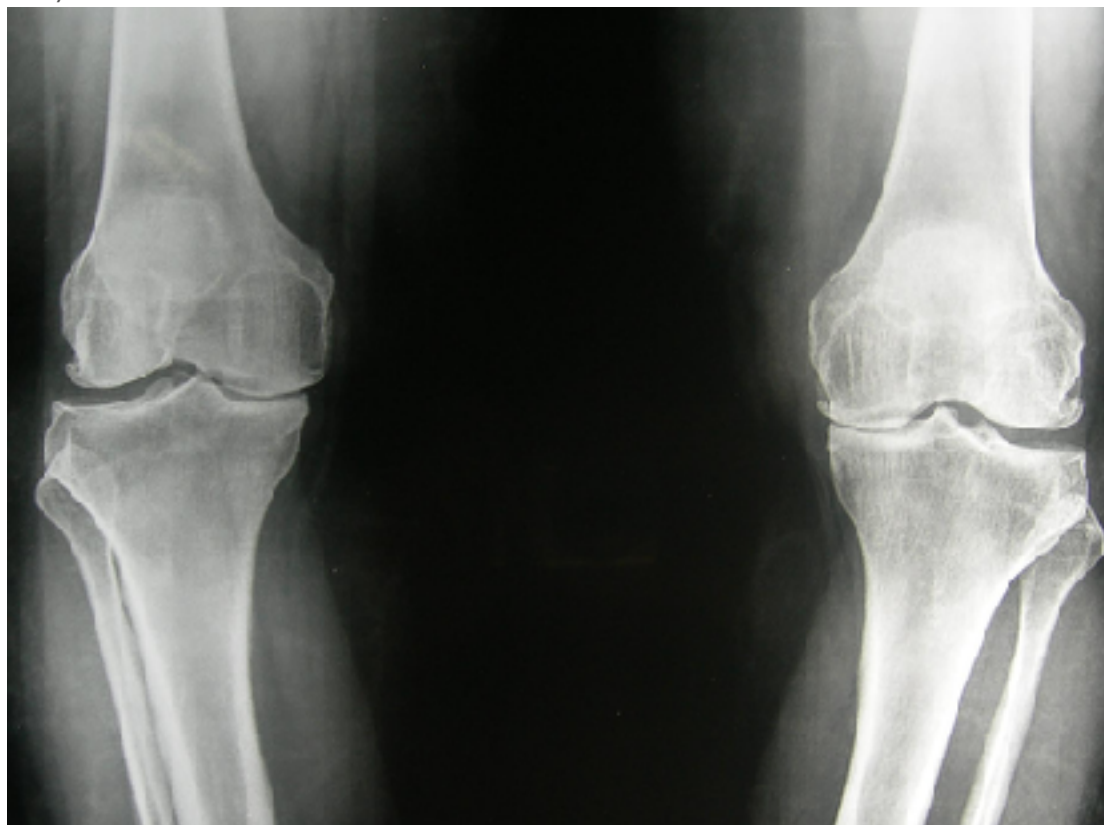
# Osteotomy

- Tibial Tubercle Osteotomy
  - X-ray of scro



# Osteotomy

- Upper Tibial Osteotomy
  - X-ray of varus knees with osteoarthritis





# Osteotomy

- Upper Tibial Osteotomy is often combined with a knee scope
- X-ray of a corrected varus knee



Unhealed



Healed

# Osteotomy

- Distal Femoral Osteotomy
  - X-ray of valgus knees with osteoarthritis



# Osteotomy

- Distal Femoral Osteotomy is often combined with a knee scope



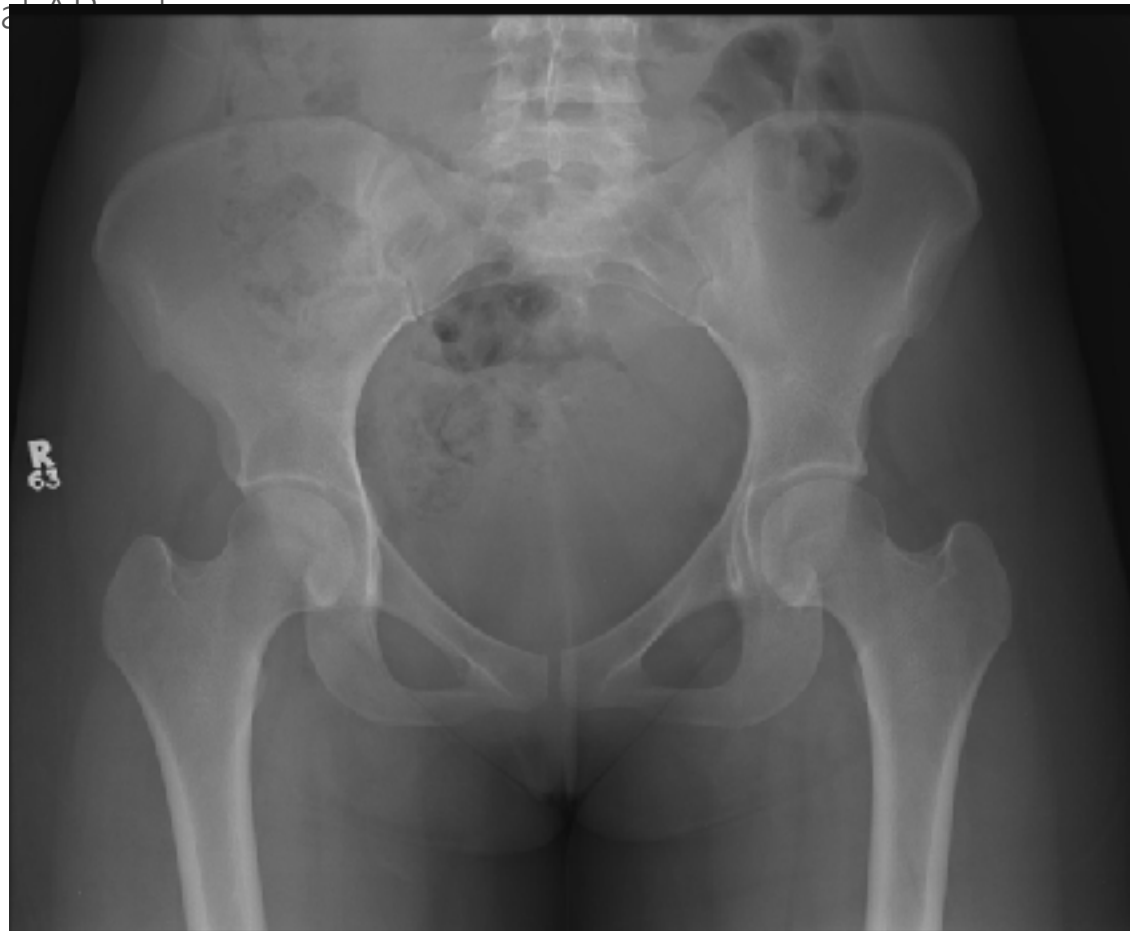
Unhealed



Healed

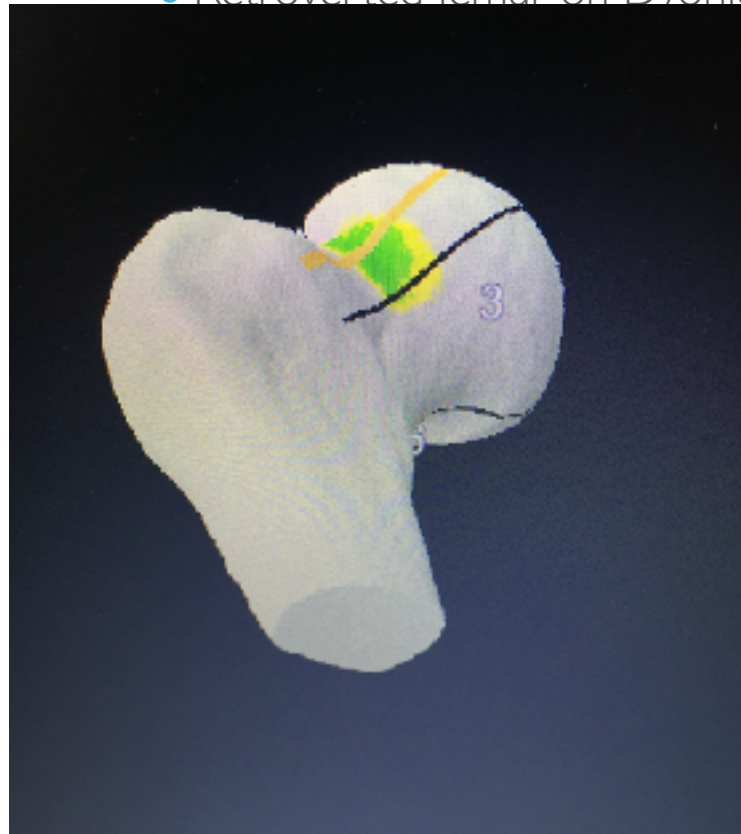
# Osteotomy

- Rotational Femoral Osteotomy
  - Normal AP Pelvis



# Osteotomy

- Rotational Femoral Osteotomy
  - Retroverted femur on Dyonics analysis of a CT



# Osteotomy

- Rotational Femoral Osteotomy is often done with a hip scope



Unhealed



Healed

# Osteotomy

- Conclusions
  - Cutting and realigning the bone to improve function and reduce pain
  - Cut, realign, stabilize, heal and rehabilitate